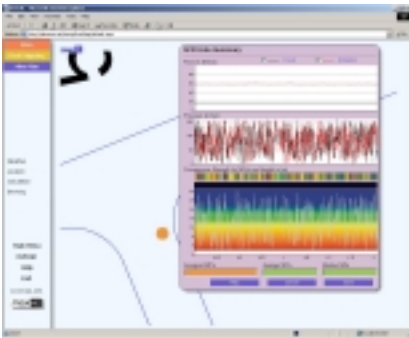


Maxie Roof Mapping Module

Maxie Roof Mapping Module is a software application that runs under the Maxie Framework. It is designed to provide a graphical representation of mine geology as derived from the specific energy associated with drilling roof bolt holes. The user can interactively determine the compressive strength of any given drill holes within the mine plan.

Drill location is entered in the mine coordinate system format and tools are provided to facilitate this process. The compressive strength algorithm is configurable by the user to allow for correlation with separately sourced geological data. The algorithm may be changed by authorised access at any time without corrupting existing data.



Features

Data is collected without human intervention

Drill holes are colour-coded conforming to site hazard classification

Chart displaying pressures, flows and MPas in 1/10 of second intervals

Facility to edit drill hole locations

Drill hole data can be associated with various parameter sets

Real time error logging

User friendly graphical interface

Benefit

Graphical presentation of mine hazards

Productivity tool

Forecasting tool

Specification

OS	Windows 2000, XP, or 2003 Server with IIS and .NET Framework
Database Server	Microsoft SQL Server 2000
Requirement	Maxie Framework

Monduran Pty Ltd.
www.monduran.com
support@monduran.com

Phone: (07) 4973 7829
 Fax: (07) 4973 7846