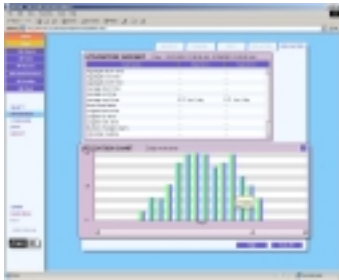


Maxie Fleet Module

The Maxie Fleet Module is a software application that runs under the Maxie Framework. The Maxie Fleet Module is a generic event based data logging system, designed to deliver high levels of accurate, secure, management information. The Maxie Fleet Module is fully scalable and the size is restricted only by the available memory capacity. The performance and response of the system is principally linked to the size of the database and the processing speed of the server.

The event data comes from Maxie Fleet Host Node placed on the vehicles. It uploads the event data to the server every time it goes pass the Maxie Fleet Access Point.

Once the data is delivered to the server, the server then processes the data and produces the KPIs, which can then be downloaded as a report or viewed in the web browser.



Features

Data is collected without human intervention

Ability to compare performances between two cost centres

Provision to attach notional or deemed tariff rate to individual vehicle

Facility to provide consolidated management reports to stakeholders

Data integrity and storage

Real time or near real time data representation

Benefit

Reduction in vehicle maintenance cost

Reduction in vehicle abuse

Improvement in vehicle availability and utilisation

Improved access by stakeholder

Improved executive management reporting

Specification

OS	Windows 2000, XP, or 2003 Server with IIS and .NET Framework
Database Server	Microsoft SQL Server 2000
Requirement	Maxie Framework

Monduran Pty Ltd.
www.monduran.com
support@monduran.com

Phone: (07) 4973 7829
 Fax: (07) 4973 7846